



**INNOVATIVE
SOLUTION FOR
PRECISE REMOVAL
OF BROKEN TAPS &
DRILLS**



Broken Tap???



worried???

**Don't Worry we have a
Solution for you !!!**



What are you using to avoid breakage during tapping operations?



ER Tapping
Collet



Quick Change
Tapping
Adaptor



Synchro
Tapping chuck

Still facing the below issues?



A broken tap and the accompanied stress along with it

Introducing the most awaited product for removing broken Taps and Drills



**Model EC-1000 to remove
Taps from M3 - M30**

Features:

Light, small, portable and compact design

High speed and efficiency with low cost

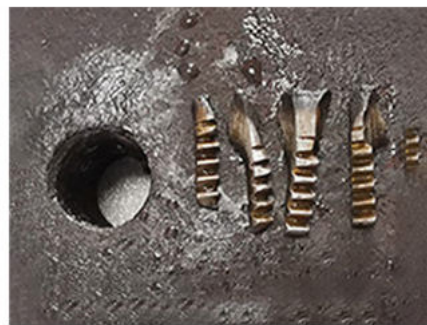
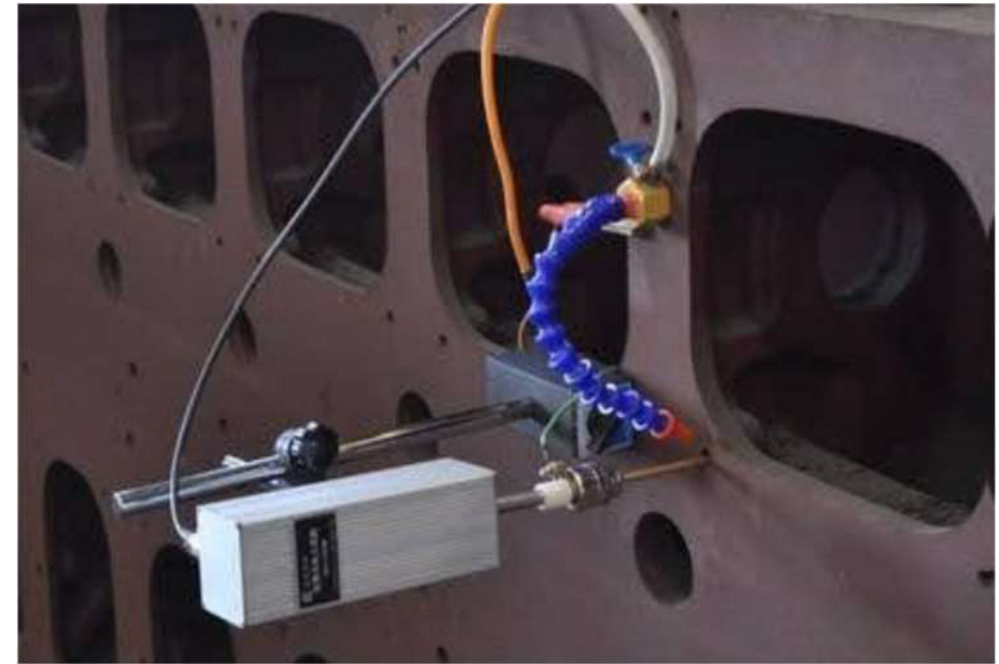
Simple to operate

Easy to remove broken tap

Operating range: 100-240 V (50-60 Hz),

Single phase

Machine in Action

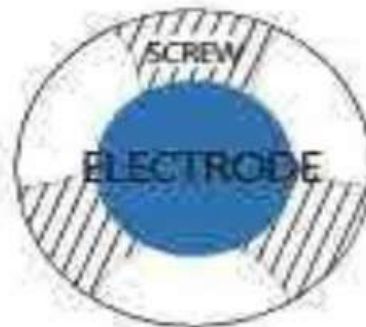


Electrode selection

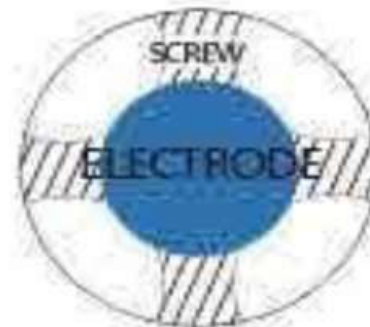


SELECT SUITABLE ELECTRODE SHAPE

According to the size of the broken item to select suitable electrode shape and size of electrode materials, and choose brass wire, brass rod or copper tube, etc



M2-M10 SCREW
REMOVAL METHOD



M12-M14 SCREW
REMOVAL METHOD



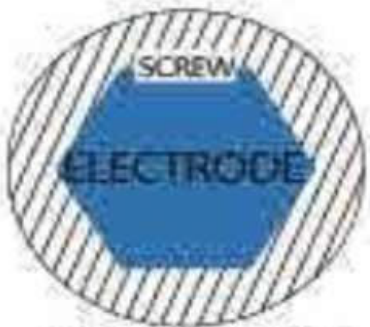
M14-M18 SCREW
REMOVAL METHOD



M20-M30 SCREW
REMOVAL METHOD



M6-M16 SCREW
REMOVAL METHOD

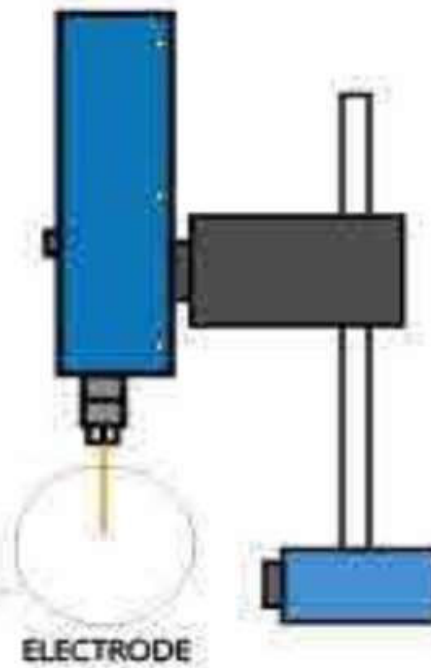
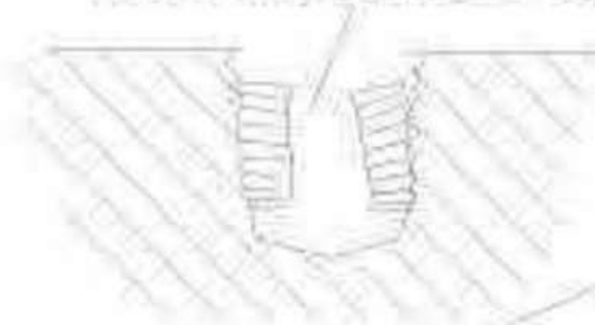


M16-M30 SCREW
REMOVAL METHOD



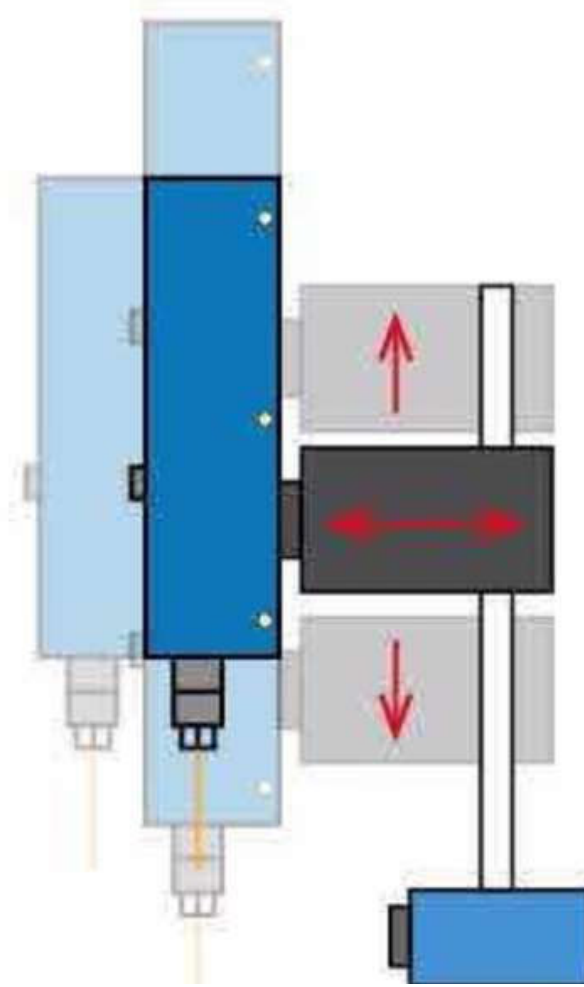
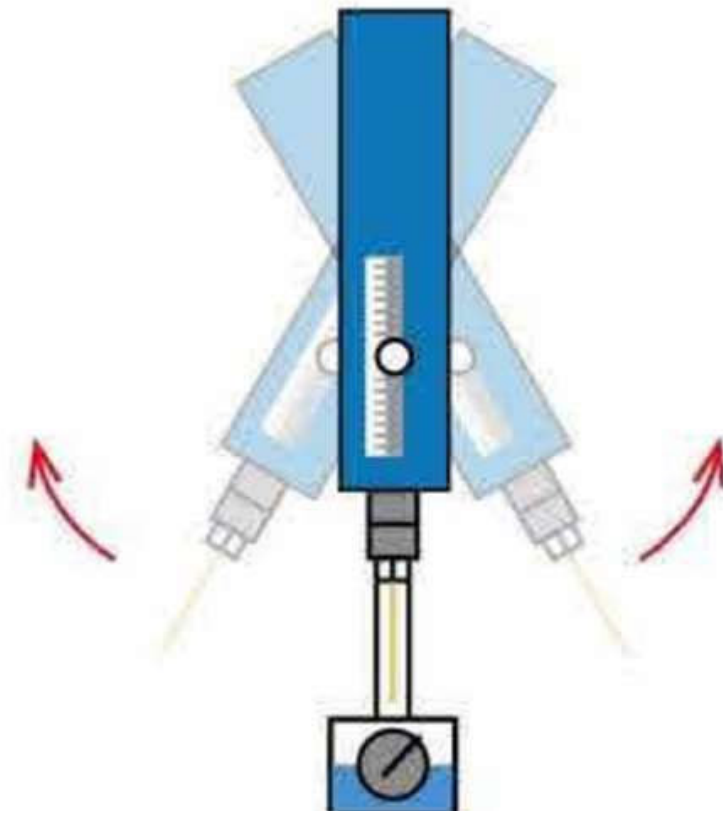
M10以上 EXTRUSION
TAPS REMOVAL METHOD

Take out the broken tap



Ease of Application, can be worked in your desired angle

WORKING HEAD CAN BE ARBITRARY
ANGLE ADJUSTMENT



Model Variants

MODEL	EC-600	EC-1000
Input	AC220V 50/60HZ	AC220V 50/60HZ
Power	600W	1000W
Voltage	80V	80V
Electrode range	0.5mm-10mm	0.5mm-10mm
Manual travel	310mm	310mm
Automatic travel	60mm	60mm
Processing speed	≥1mm/min	≥1.5mm/min
Working liquid	Tap water (pure water / distilled water is better)	
Size	380×200×320(mm)	380×200×320(mm)
Weight	15KG	17KG
Location control	√	√

Contact us:

EcoCut MACHINING SOLUTIONS

#3/1, 1ST FLOOR, WARD NO. 38, SRI MUNESWARA INDL ESTATE, PEENYA, BANGALORE – 560058

 : +91 984560557 / +91 7204597315

 : Balajee.adapa@eccout.in / Akshay@ecocut.in